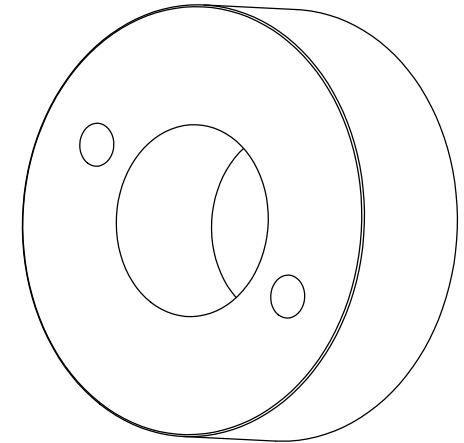


REVISIONS		
REV	DESCRIPTION	DATE



- NOTES:
1. MAKE FROM MCMASTER CARR # 6436K71.
  2. HOLES TO BE 90 DEGREES FROM SPLIT.
  3. CLOCKING IS NOT CRITICAL.
  4. TAPPED HOLES TO BE IN LINE WITH BORE.
  5. .750 DIMENSION APPLIES WHEN COLLAR IS CLAMPED TO 1/2" PIN.

UNLESS OTHERWISE SPECIFIED:		<div>High Precision Devices</div> <div>1668 Valtec Lane, Suite C, Boulder, Colorado 80301 Phone: (303) 447-2558 Fax: (303) 447-2548 Web Site: <a href="http://www.hpd-online.com">www.hpd-online.com</a></div>				
DIMENSIONS ARE IN INCHES DECIMAL TOLERANCES: .X ±.030 .XX ±.015 .XXX ±.005						
ANGULAR TOL: ± 1° SURFACE ROUGHNESS:63/√		<div>TITLE:</div> <div>p02101-327 shaft collar</div> <div>CONFIGURATION: 00-Default</div>				
INTERNAL AND EXTERNAL SURFACE INTERSECTIONS SHALL BE UNIFORMLY FINISHED WITH CHAMFER .005/.010 X 45° OR RADIUS .005/.010. CHAMFER ALL THREADED HOLES 110° OF MAJOR DIAMETER X 45°						
MATERIAL:	-	SIZE	QTY PER ASSM: 1	SCALE: 2:1	SHEET 1 OF 1	REV
FINISH:	NONE	A	DATE: 5/20/2004	DRAWN BY: C. Danaher		A